

THANK YOU FOR PURCHASING THIS 60-SECOND DIGITAL THERMOMETER. READ THESE INSTRUCTIONS CAREFULLY TO ENSURE PROPER AND SAFE OPERATION OF YOUR THERMOMETER.

PLEASE READ AND SAVE THESE INSTRUCTIONS

- ⚠ This product is not intended to diagnose or treat any health problem or disease and should not be used as a substitute for the consultation and advice of a physician or other medical professional.
- ⚠ Choking Hazard: thermometers should only be used under the supervision of an adult; removable cap and battery may be harmful if swallowed.
- ⚠ This thermometer should be held during use; the patient should be seated or lying down during readings.
- ⚠ Before use, it is recommended that the patient avoid eating, drinking, smoking or exercising for at least twenty minutes prior to taking a measurement. Never walk, run or talk during a measurement.

FAHRENHEIT CELSIUS SWITCHABLE FEATURE

This unit takes measurements in both Fahrenheit and Celsius. While the unit is OFF, press and **hold** the POWER button for two-three seconds. After a brief self-test, the display will change modes and show the new temperature reading mode; release the POWER button and proceed to the OPERATING INSTRUCTIONS.

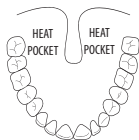
MEMORY RECALL

This unit includes a recall of the last measurement taken. When the unit is OFF, press the POWER button to turn the unit on, and release. After the self-test, the unit will briefly show the last reading with an 'M' on the display. If there is no last memory, the thermometer will proceed to temperature taking mode.

OPERATING INSTRUCTIONS

Wipe or dip the probe tip with isopropyl alcohol to clean before use; apply a probe cover if using.

1. Press and release the POWER button to activate the thermometer. The unit will beep and the display will show all of the digital display symbols as it performs a self-test before showing the last reading in memory. If there is no last reading in memory, the unit will go directly to step 2 below.
2. 'Lo' with a flashing °F(°C) will appear in the display, followed by a brief flash of 98.6°F(37°C); the display will return to the 'Lo' with flashing °F(°C), indicating that the thermometer is ready for measurement.
3. **ORAL USE**—Place the probe under the tongue as near as possible to a heat pocket as noted in the diagram. Readings will be progressively lower the further the probe is from the indicated heat pockets. Hold the thermometer in place during the reading; do not bite down on the thermometer. The mouth must remain closed to ensure accurate results.



UNDERARM (AXILLARY) USE—Place the probe tip under the arm so that the tip is touching skin; hold the thermometer parallel, slightly angled upwards. Position the arm across the chest to ensure the tip is completely covered. Underarm temperature readings are generally 1°F lower than oral readings.

RECTAL USE—Lay the patient on their side or stomach with their legs hanging down. Gently insert the tip of the probe **NO MORE THAN 1 INCH** into the rectum; stop immediately if you detect resistance. Always hold the thermometer in place during measurement. Rectal temperature readings are generally 1°F higher than oral readings.



4. When the reading is complete and the peak temperature has been reached, the °F(°C) will cease flashing and the measurement results will appear on the display.

If the reading is below 100°F(37.7°C), the unit will sound ten long beeps; if the reading is at or above 100°F(37.7°C), the unit will sound ten sets of three short beeps.

5. To turn the unit off, simply press the POWER button. The unit will automatically shut-off after approximately ten minutes.

PROBE COVER USE

Disposable, hygienic probe covers are recommended for use with stick thermometers to prevent contamination. Probe covers are intended for one-time use only; a new probe cover should be used with each application. Probe covers can commonly be found at your local mass market or drug-store retailer.

CARE AND CLEANING INSTRUCTIONS

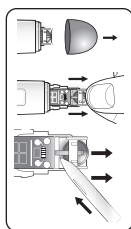
Store the unit in the provided protective case when not in use. Do not store the thermometer where it will be exposed to direct sunlight, dust or humidity. Avoid extreme temperatures. Do not attempt to disassemble the unit.

Clean the thermometer by wiping with rubbing alcohol (70% isopropyl alcohol) or soap and water. Do not submerge in any liquid or autoclave. Wipe the thermometer with a dry cloth and allow to air dry.

REPLACING THE BATTERY

The low-battery indicator symbol will appear on the lower right of your display when the battery needs to be changed.

1. Remove the battery cap by pulling gently. Looking at the unit from the back side (ratings label face up) carefully slide the battery tray out so the entire battery is exposed.
2. Remove the battery with a non-metal tool. Do not attempt to remove the thin plastic cover bar.
3. Replace the battery with a LR41 alkaline or SR41 silver oxide type battery with the positive (+) side facing up. Carefully replace the battery cap.
4. Do not dispose of used batteries in the trash. Consult your local recycling center for the proper way to dispose of batteries in your area. Keep used batteries away from children, pets and excessive heat.



DEVICE LABEL SYMBOLS



Warning—Symbol indicates a warning, prohibition or mandatory action that mitigates a risk that is not necessarily obvious to the device operator



Type BF Applied Parts—Indicates that a part of this unit comes in contact with the patient in order to carry out its intended function; in the case of this device the cuff is the Type BF Applied Part



Direct Current—This device uses 1x 1.5V battery, size LR41



Environment Protection—dispose of this product properly; consult with your local recycling ordinances for proper recycling and disposal

SPECIFICATIONS

BATTERY:

One 1.5V button size battery LR41 or equivalent

BATTERY LIFE:

Approximately 24 months

AUTOMATIC SHUT-OFF:

Approximately after 10 minutes of non-use

ACCURACY:

$\pm 0.2^{\circ}\text{F}$, 95.9°F - 107.6°F ($\pm 0.1^{\circ}\text{C}$, 35.5°C - 42.0°C)

$\pm 0.4^{\circ}\text{F}$, below 95.9°F or over 107.6°F ($\pm 0.2^{\circ}\text{C}$, below 35.5°C or over 42.0°C)

MEASUREMENT RANGE:

90.0°F - 109.9°F (32° - 42.9°C)

OPERATING TEMPERATURE:

41°F - 104.0°F (5°C - 40°C); $\leq 85\% \text{RH}$

STORAGE TEMPERATURE:

14.0°F - 131.0°F (-10°C - 55°C); $\leq 95\% \text{RH}$

DISPLAY:

Liquid crystal display

DISPLAY RESOLUTION:

4 digits (1/10th of a degree increments)

DIMENSIONS:

4-7/8" X 3/4" X 3/8"

WEIGHT:

0.35 ounces

Specifications are subject to change without notice.

ONE-YEAR LIMITED WARRANTY

Your Digital Thermometer is covered by the following limited warranty commencing upon the date of purchase, and subject to the following terms and conditions:

The Warrantor warrants that its Digital Thermometer will be free from defects in materials and workmanship under normal consumer usage for a period of one year for the original purchaser of the Digital Thermometer. This Warranty excludes the included battery. Contact Customer Care for further Warranty details.

Toll-Free Customer Care Help Line: 1-866-326-1313
Monday – Friday 8:30 a.m. – 4:30 p.m. CST